

## Lead (Pb) Remediation Ahead of Schedule

### In This Issue:

Heading	Page:Column
Newsletter Deadlines	1:A
Range Closure Report	1:A
Club Meeting Minutes	1:C
Indoor Shoot	3:B
Bug Shoot Report	3:B
Upcoming Shoots	4:top
Officers	4:mid

S	M	T	W	T	F	S
					1	2
3	4	5	6	7	8	9
10	11	12	13	14	15	16
17	18	19	20	21	22	23
24	25	26	27	28	29	30
31						

Meeting     Stump  
 Indoor     Outdoor  
 Range Closed

### Newsletter Deadlines

Please write us about your archery experiences such that we can include them in the newsletter. If you are attending shoots at other clubs or are involved in tournaments or other archery related activities, your accounts of the events will be of interest to other club members. The deadline is the end of the Saturday before the club meeting.

### Range Closure Report (Henry)

I asked Steve Hammack, Director of Parks and Recreation for Santa Cruz, for an update. His return email said "The project is started and material is being excavated and hauled away as I write this e-mail." I also talked to a lad who said, having ridden his bike by the work that all the "pistol range structures" had been removed and "a lot" of dirt had been hauled away. I met with Steve at his office in Santa Cruz on Friday, July 25. I arrived a bit early, having taken the day off from work (I felt 53 hours

should hold them for a while). While waiting I looked at some of the brochures there and found a nice pamphlet about DeLavega

PARK HOURS	
WINTER (NOV-APR)	7 A.M. TO SUNSET
SUMMER (APR-OCT)	7 A.M. TO 11 P.M.
SANTA CRUZ ARCHERY RANGE	
NOON - 4P.M.	
SATURDAY & SUNDAY	

Park. The map printed inside includes the Archery Range and the "Park Hours" chart includes the Archery Range hours.

Steve and I talked about a number of things including the disposition of the land previously occupied by the pistol range, porta-potty maintenance, the range key situation and a link to the SCA website from the Parks and Rec web site.

You will have to come to the club meeting to find out what happened. OK, just kidding.

The area where the pistol range had been will be turned into a park-like setting with trees and, perhaps, a picnic bench or two. Steve and I will meet before the restoration work starts to discuss the best approach to building an entrance walkway for archers to access the Archery Range. The extreme erosion to the stream near the gate will be fixed.

The web site link is apparently simple, I sent Steve the link by email when I returned home, and he will forward my email to the webmaster.

My request that the city provide a key to the sanitation folks was denied. Steve felt that we should be able to find a company that would do the work during weekend open hours. That would not be optimum but it may be our only choice.

Parks and Rec has been wrestling with the key problem for years. I suggested that they use a master key scheme where police, fire, park service people and rangers would have master keys and the archery club would get the subordinate keys and be able to change them yearly at our expense. He liked the idea and will be working with "fire" to see if they find the master key idea workable.

I will provide more info as it becomes available.

Steve and I also talked about a community outreach approach to help drive awareness, understanding and a positive view of archery in the community. The goal is to improve the standing of the range and club in the community and to increase membership, while reducing any negative feelings that may arise.

To that end, and based on Steve's suggestion, I contacted the Boy Scout council office in Salinas and asked that they forward our contact information to scout troops within an approximate 15 mile radius of the range. In addition, I left voice mail for the head of the Team Center in Santa Cruz such that we can open discussions with him. I will be asking for help in this endeavor, including coaching and contacting other organizations such as cub scouts and girl scouts.

### Meeting Minutes: July 1, 2008

(Diana Reader)

#### President's Report:

Henry informed everyone that the indoor range phone was repaired by Mike Tracey and that the archery range will be closed as of July 9th for lead removal from the gun range. The gate locks will be changed during this time. The range closure is expected to take approx. 6 to 8 weeks. All scheduled club shoots will be cancelled until the range re-opens. The Au-

# SCAN

Santa Cruz Archers Newsletter July 08

gust club meeting will be held at another location, to be determined.

### *1st VP Report:*

The Redwood Coast 3D shoots are done for the season and were very successful.

### *Treasurer's Report:*

There is \$5,758.12 in the club's regular account.

### *Publicity Chair Report:*

Steve asked Predator's to sponsor a target at the October shoot. They are interested in sponsoring the steel deer target. Discussion was held on what we would ask for as far as sponsorship of targets and the possibility if getting other local businesses to sponsor targets.

Steve also brought in a proposed flyer for the upcoming October shoot. Discussion was held on how to make the shoot more fun by possibly having a "poker run" type event within the shoot and having a "Bad Boys of Branciforte" theme with paper "bad boy" targets used along with 3D animal targets.

Henry brought up the issue of Perry Ralston wanting to be the sole sponsor of the October shoot. Ralston wants to donate several bows to be used as prizes. Discussion was held on if we should accept Ralston's proposal or if we want to go back to him with an alternative proposal. Discussion was also held on various ways we could offer bows as prizes at the shoot.

### *Membership:*

Kathy Wache – working member voted in at meeting.

### *Newsletter Editor Report:*

Please send any newsletter articles to Henry Bertram.

### *Old Business:*

1. Henry talked to Steve Hammack at the city and he requested that we add a donation box to the indoor range building instead of having a free standing box in the outdoor range area.

2. Discussion was held on the proposal to order Santa Cruz Archers logo shirts. Various styles and prices were discussed. The shirt committee will look into prices and

logos and report back at the next meeting.

3. Discussion was held on alternatives to super bales. Steve volunteered to look into other options.

### *New Business:*

1. Discussion was held on the possibility of getting new gate keys from the city once the range re-opens. Henry will talk to the city to determine if it would be possible.

2. Henry will talk to Mike and Brian Tracey to see if they will volunteer to cook at the October shoot.

### **The Indoor Shoots (ed.)**

Think back, where were you on Independence Day evening 2008. I, and a small band of persistent archers, flung arrows at the last indoor shoot before the range closure.

All the Covington kids improved their scores, Emily, shooting for score for the first time in the indoor had trouble with arrow matching until late in the evening.

Mark Woodhead and I continued our head to head battle for a coveted position on the recurve board. I didn't do my cause much good, having significant trouble finding the center, while Mark was just a bit off the pace.

Pat Pagnella was squeaking by with only 52Xs for his standard 300.

7/4/2008	Style	Score	x
Henry Bertram	Trad-R /A/M	171	1
Mark Woodhead	Trad-R /A/M	203	2
Pat Pagnella	FS/A/M	300	52
Scott Covington	FS/A/M	291	30
Emily Covington	BB/p/F	47	0
Garren Covington	BHFS/c/M	159	2
Kevin Covington	BHFS/c/M	105	2
Heather Covington	BHFSL/y/F	157	2

### **Bug Shoot (ed.)**

It was a bit on the foggy side at this year's Bug Shoot. It can be quite hot mid July at Mt Madonna but the fog blowing around on the hill-top kept things quite cool. In the

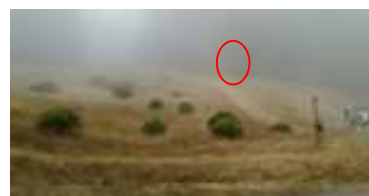
morning, the breeze blowing through the trees loosened the condensed fog from the needles and provided something quite similar to rain. While the footing was a bit tenacious walking over a few of the half culvert bridges, the dampness wasn't a problem.



Kathy Wache, Steve Grundy and I met two archers who are not affiliated with clubs. Together we wandered the confines of the Mt Madonna range to ply our skills against a combination of bugs, spiders, flying insects and a few very loud looking "howlers." The distances were from 5 feet out to 90 yards.



Steve, Kathy, Killer Bee, Roger (back) & Fred. Photo by Henry who's reflection you can barely see in the gleam of the bee's eye.



This target should be no problem, let's see, 90 yards, Bugula barely visible, no problem.

# SCAN

*Santa Cruz Archers Newsletter July 08*

**Upcoming shoots (ed.)**

**1 Million B.C.** (aka Dino shoot) on August 2<sup>nd</sup> and 3<sup>rd</sup> at SF Archers in Pacifica. For information call: <http://www.sfarchers.com>.

**900 Round 9AM**

Sept 13<sup>th</sup> or 14<sup>th</sup> at Salinas Bowmen 1 mile off Hwy101 on Crazy Horse Canyon Road (info: Terry Handley 408 674-3204)

or **900 Round 9AM**

Sept 7<sup>th</sup> at Black Mountain Bowmen in South San Jose (info: Stanley Boehm 408 264-2379)

<b>President</b> Henry Bertram	<b>Treasurer</b> Diana Reader	<b>Outdoor Range Captain</b> Mike Tracy	<b>Board of Directors</b> Jack Mills Larry Yien Andy Sterbenz Ed Terribilini
<b>1<sup>st</sup> Vice President</b> Ralph Reader	<b>Indoor Range Captain</b> Rick Chase	<b>Gate Monitor</b> Randy Redmond	
<b>2<sup>st</sup> Vice President</b> Wolff Bloss	<b>Membership Chair</b> Open	<b>Newsletter Editor</b> Henry Bertram	
<b>Secretary</b> Diana Reader	<b>Publicity Chair</b> Steve Grundy	<b>Key master</b> Mike Tracy	

**Official address:**

Santa Cruz Archers  
P.O. Box 66295  
Scotts Valley, CA 95067-6295

**Official voice mail:**

(831) 461-0520 Voice mail only.

Introduction message announces range open hours and dates and times for the club meeting and club shoots.